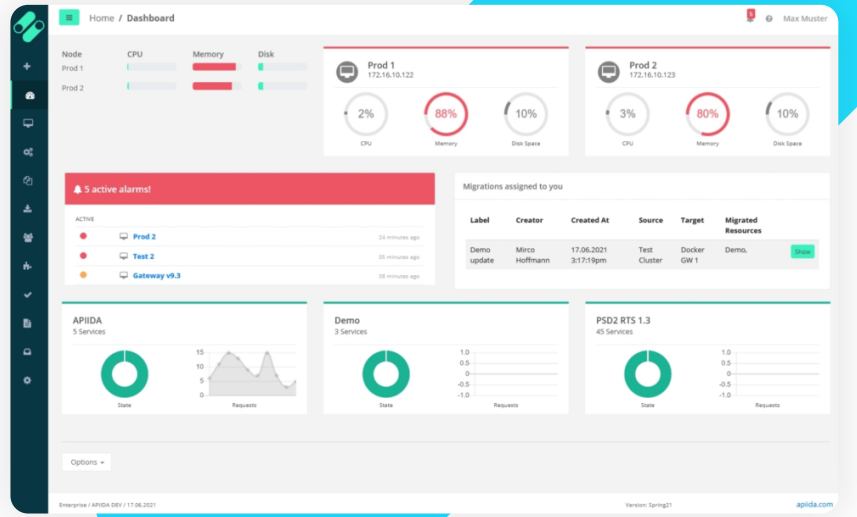


APIIDA API  
Gateway Manager  
— Datasheet

APIIDA API GATEWAY MANAGER

# One Dashboard to Manage All Your API Gateways



The Layer7  
Admin Portal

APIIDA API Gateway Manager is the market-leading solution for API Operations Automation, providing a complete set of features for fast and reliable API Deployment and Migration and comprehensive API Monitoring and Alarming.

The API Gateway Manager is the missing link in Broadcom's Layer7 portfolio and allows you to use modern workflows including git and CI/CD support together with your API Gateway.

Integrate With the  
Tools You Already Use

Improve your API Admin Portal with world-class integrations so that your team can do its best work.



APIIDA AG  
Goebelstrasse 21  
64293 Darmstadt  
Germany

Phone: +49 6151 500 18-0  
E-Mail: hello@apiida.com

One Dashboard to Manage  
All Your API Gateways

The Layer7 platform is known for its extensive and rock-solid functionality when it comes to publishing and securing APIs. With APIIDA API Gateway Manager you gain access to additional features that make working with the Layer7 API Gateway much more convenient and modern. Benefit from git-based workflows and a central administration of all form factors.

With the end of Enterprise Service Manager (ESM), APIIDA API Gateway Manager is the only visual management tool for Layer7. While we provide a comprehensive REST-based API and a CLI for power users and automation, the quick and easy visual migration flow enables all of your team to perform day-to-day tasks instead of only a selected few.



### One-Click-Migration

Easy and reliable migration of new API service versions. Simplify and speed up migration between the different environments for development, test, QA and production.



### CI/CD Pipeline Automation

Define migration pipelines and perform automated tasks before and after migration (e.g., send a webhook to a test tool). Integrate with your existing CI/CD tools (such as Jenkins).



### Version Control

Enhanced Management, Categorization and Version Control of APIs using our integration with version control tools such as Git, GitLab or Nexus Repo. Automate the deployment of new versions with a full DevOps flow.



### Modern Dashboard

Freely customizable Dashboard, showing the status of services and API Gateway instances. Create your personalized views choosing from a library of powerful component widgets.



### Health Check

Assessment of the current state of your Layer7 security solutions to identify performance improvement opportunities. The service reviews the technical structure of the deployed solution, as well as the operational strategy, and analyzes the training needs of the support staff.



### Alerting

Automated alerting in the event of a service degradation using your favorite notification channels, including email, Slack, Teams, Twilio, Mattermost, Webhooks, and others.

Features	Metrics-Edition	Migration-Edition	Enterprise-Edition
Migrations		●	●
Dashboard	●	●	●
Metrics per Gateway	●		●
Metrics per Service	●		●
Alarming	●		●
Prometheus Integration	●		●
CI / CD Integration		●	●
Git-based Workflows		●	●
Integrations of 3rd party Apps	●	●	●
Advisor			●
Service Templates			●
Rollback Migrations		●	●
Manage Virtual Appliances	●	●	●
Manage SQL-backed Container Gateways	●	●	●
Manage Ephemeral Gateways			●
Automations	●	●	●
Automatic Mapping of Elements		●	●
Dependency Tree		●	●